

Tigercat

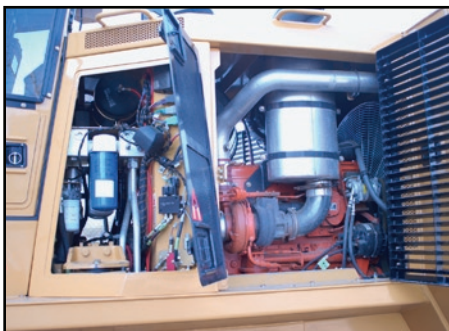
480 MULCHER



The new 480 is a 370 kW (500 hp) class track driven mulcher carrier well suited to tough terrain, sensitive site applications and large scale land clearing and right of way projects.

BENEFITS AND ADVANTAGES:

- Cummins QXC15 Tier III engine
- Efficient, high capacity cooling system
 - Automatic variable pitch, reversible fan for improved fuel economy and cold weather starts
- Oscillating track system with heavy duty track frames and mounting system
 - Long track frames for low ground pressure
- Highly refined closed loop track drive system
- High-lift boom geometry
- Tigercat build quality for full-time forest duty cycle
- Quiet, climate controlled operator's station
 - Insulated and isolation mounted with high output heater and A/C
 - Extreme duty air ride seat
 - CRF counter rotate function for one touch 'on a dime' turns
 - Ergonomic armrest mounted joystick steer and drive
- Excellent performance in challenging terrain
- Choice of horizontal drum type mulching attachments requiring up to 328 kW (440 hp)



Excellent access to both sides of the engine and hydraulic filters



High lift boom system



Compact and manoeuvrable

SPECIFICATIONS

DIMENSIONS with 800 mm (31.5 in) triple grouser shoes

LENGTH less attachment.....	5 690 mm (224 in)
GROUND CLEARANCE.....	535 mm (21 in)
HEIGHT.....	3 300 mm (130 in)
WIDTH.....	2 590 mm (102 in)
WEIGHT less attachment.....	19 450 kg (42,880 lb)
GROUND PRESSURE.....	35 kPa (5 psi)

POWER

ENGINE.....	Cummins QSX15 Tier III 373 kW (500 hp) @ 1800 rpm Precleaner and 2-stage air cleaner
PEAK TORQUE.....	2 365 Nm (1,744 lbf-ft) @ 1400 rpm
COOLING.....	Aluminum side by side radiator, oil cooler, charge air cooler and A/C condenser Swing-out intake debris screen
FAN.....	Flexaire® automatic variable pitch, reversible
FUEL CAPACITY.....	850 L (225 US gal)

TOP SPEED

FORWARD/REVERSE.....	7,25 k/h (4.5 mph)
----------------------	--------------------

HYDRAULIC SYSTEM

PUMP, ATTACHMENT.....	Piston
PUMP, TRACK.....	(2) closed circuit piston
PUMP, BOOM.....	Piston
RESERVOIR.....	288 L (76 US gal)
FILTRATION.....	(8) spin-on, 7 micron full flow
CYLINDERS, BOOM.....	(4) 115 mm (4.5 in) bore

UNDERCARRIAGE

TRACK FRAMES.....	D5 heavy-duty forestry Integral track guides, ramp angles, oscillation
TRACK CHAIN.....	D5 190 mm (7.5 in) pitch sealed and greased
FINAL DRIVE.....	(2) axial piston motors; Infinitely variable speed
TRACTIVE EFFORT.....	214 kN (48,000 lbf)
GEARBOX.....	Triple reduction planetary type with brake
FRONT IDLER.....	Hydraulic track adjuster; Spring shock absorber
ROLLERS, UPPER.....	(3) D5 single flange
ROLLERS, LOWER.....	(9) D5 single and double flange tractor type
TRACK SHOE.....	800 mm (31.5 in) triple grouser Optional..... 800 mm (31.5 in) double grouser 915 mm (36 in) triple grouser tri-track 915 mm (36 in) double grouser tri-track

BRAKES

TRACK.....	Friction disc type Automatic spring applied, hydraulic release
------------	---

OPERATOR'S STATION

CAB.....	Fully enclosed, insulated and isolation mounted (2) doors and roof exit Air conditioner heater and pressurizer Polycarbonate front and rear glazing Forward sloping windshield Sliding tempered glass side windows Side door screens, hinged AM/FM CD stereo
SEAT.....	Extreme duty air ride, fully adjustable Armrest mounted joysticks

OPERATOR CONTROLS

DRIVE/STEERING.....	IQAN electronic, joystick with CRF
BOOM.....	IQAN electronic, joystick

OTHER STANDARD EQUIPMENT

Back-up alarm
Hydraulic reservoir hand fill pump
Fire extinguisher
Air compressor

ELECTRICAL

BATTERY.....	(4) 12 v
ALTERNATOR.....	80 amp, 24 v
SYSTEM VOLTAGE.....	24 v

OPTIONAL EQUIPMENT

Winch
Ground level fueling system
Halogen work lights
CB radio

MULCHING HEAD

Flexible hydraulic system; Choice of horizontal drum type mulching attachments requiring up to 440 hp

TIGERCAT RESERVES THE RIGHT TO AMEND THESE SPECIFICATIONS AT ANY TIME WITHOUT NOTICE

TIGERCAT 480 MULCHER



40 Consolidated Dr.
P.O. Box 544
Paris, Ontario
Canada, N3L 3T6
(7039) 2 0409•Tig

E-mail: comments@tigercat.com
Internet: www.tigercat.com
Tel: (519) 442-1000
Fax: (519) 442-1855

Tigercat®